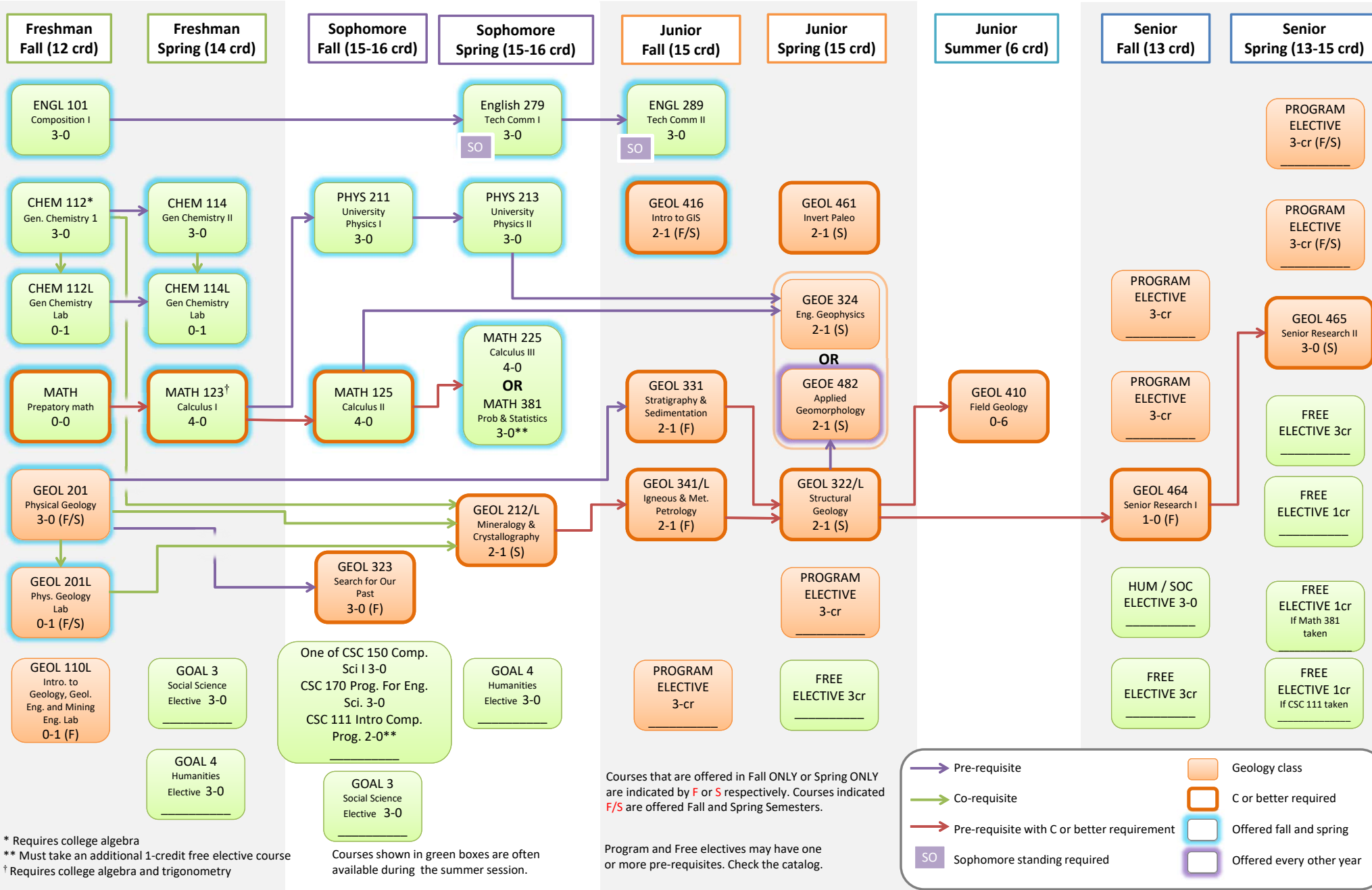


BS in Geology Curriculum Flowchart

Effective Fall 2019



RECOMMENDED ELECTIVES BY SEMESTER & FOCUS AREA			
Focus Area(s)	FREE ELECTIVES BY SEMESTER	Focus Area(s)	PROGRAM ELECTIVES BY SEMESTER
	Every Fall and Spring		Every Fall and Spring
	4 CSC 150 Computer Science I	1,4	GEOE 201L Surveying for Mining and Geol. Eng.
	4,6 CSC 170/L Programming for Eng. & Scientists	3,4,5	GEOE 475/L Groundwater
	4,6 CSC 215 Programming Techniques		Every Fall
	5 MATH 315 Linear Algebra	1,3	GEOE 466/L Engineering/Environmental Geology
	5 MATH 321 Differential Equations (+every summer)	4,6	GEOE 419 Advanced Geospatial Analysis
	Every Fall	1,3,4,6	GEOE 420 Introduction to Remote Sensing
	2 BIOL 151 General Biology I		Every Spring
	2 BIOL 221/L Anatomy	1,3,5,6	GEOE 324/L Engineering Geophysics I
	2,3 BIOL 311/L Principles of Ecology	1	GEOE 461 Petroleum Drilling and Production Eng.
	3 BIOL 331 Microbiology	2	GEOE 372 Dinosaurs
	4 CEE 437 Watershed and Floodplain Modeling	1,2,3,6	GEOE 403 Regional Field Geology (when offered)
	4,6 CSC 111/L Introduction to Computer Programming	4,6	GEOE 417 Geospatial Databases
	1,4 MEM 301/L Computer Applications in Mining	2	GEOE 475/L Vertebrate Fossil Prep./Conservation
	1 POLS 407 Environmental Law & Policy	1	GEOE 476 Petroleum Geology
	Every Spring		Fall- Even Years Only
	2,3 AES/BIOL 406 Global Environmental Change	1	GEOE 462/L Well Log Analysis
	2 BIOL 153 General Biology II	1,6	GEOE 422/L Tectonics and Sed. Basin Analysis
	2 BIOL 326 Biomedical Physiology	2	GEOE 474 Paleontological Res. Management
	5,6 MATH 382 Probability Theory and Statistics II		Spring- Even Years Only
	1 MEM 120 Introduction to Mining	1,3,5	GEOE 467 Introduction to Geomechanics
	1 MEM 204 Surface Mining Methods and Unit Op.	2,3	GEOE 435 Geomicrobiology
	1 MET 220L Mineral Processing and Res. Recovery Lab	1,6	GEOE 442/L Optical Petrology
	1 MEM 307 Mineral Exploration and Geostatistics	1	GEOE 451/L Economic Geology
	Fall- Even Years Only	2	GEOE 473/L Museum Exhibit Design
	3 AES 201 Introduction to Atmospheric Sciences		Spring- Odd Years Only
	2,3 AES 403 Biogeochemistry	2,3,4,6	GEOE 482/L Applied Geomorphology
	Spring- Even Years Only	1,3	GEOE 351 Earth Resources and the Environment
	5 MATH 451 Math Modeling	1,5,6	GEOE 444 Orogenic Systems
		1,5,6	GEOE 456 Global Geophysics
			Fall- Odd Years Only
		3,6	GEOE 421 Aqueous Geochemistry
		2	GEOE 472/L Museum Collections Management
		1,3,5,6	GEOE 450 Fluid and Thermal Diffusion
			Every Summer
		1,3,6	GEOE 410 Field Geology
		2	GEOE 471 Field Paleontology
	Key for Focus Area(s) 1 Energy and Mineral Resources 2 Paleontology 3 Environmental Geology 4 Geospatial Technology 5 Geomathematics 6 Solid Earth and Tectonics		

Electives may be spread across several focus areas or concentrated in one area. Free electives may include additional geology courses if desired.