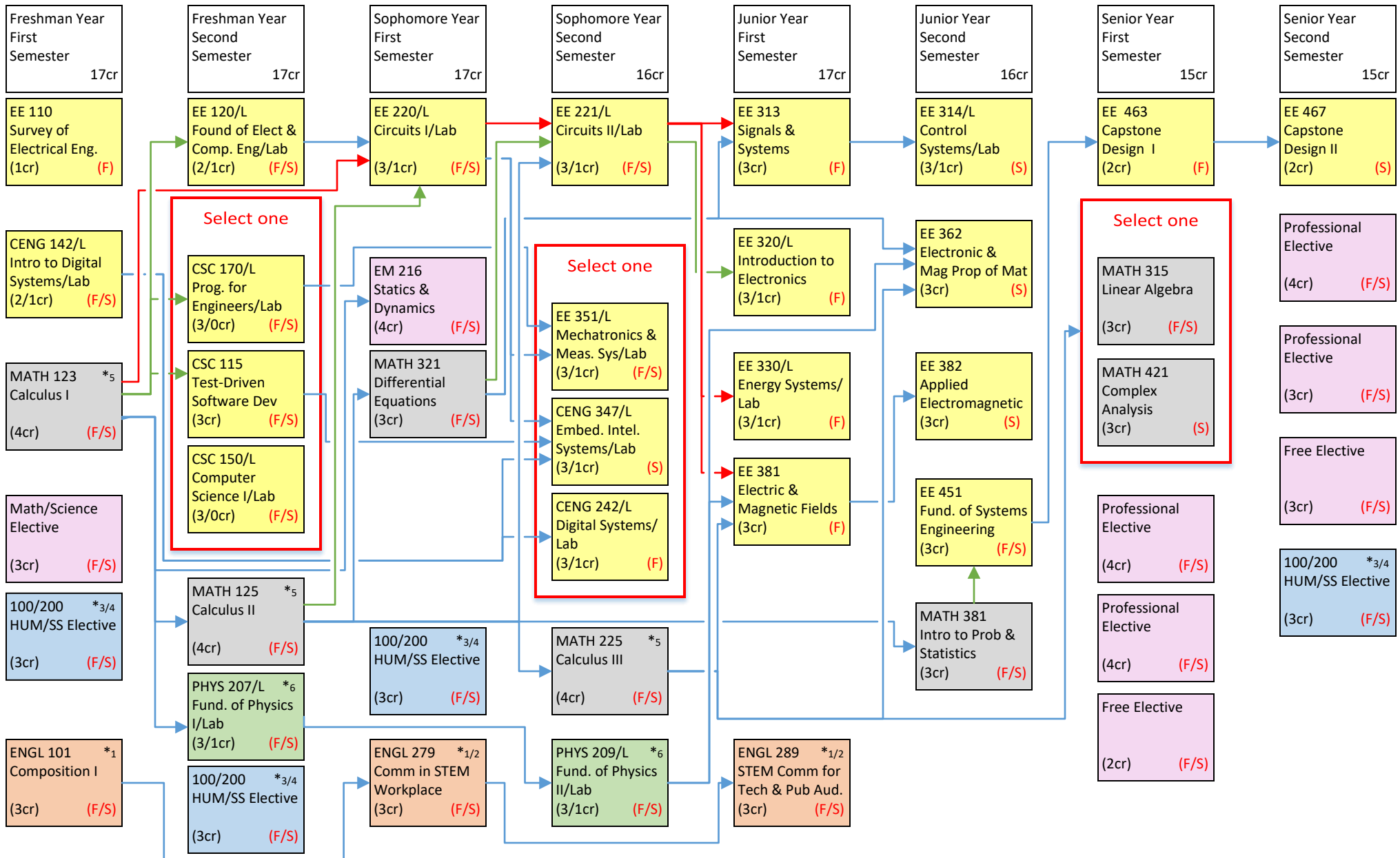


## BS Electrical Engineering Curriculum Flowchart (2024-2025) - 130 Credits



Courses that are offered in Fall ONLY or Spring ONLY are indicated by **F** or **S** semesters, respectively.

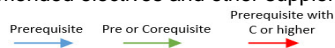
Courses indicated **F/S** are offered Fall and Spring semesters.

\*1-6 Indicates courses that may be used to satisfy goals 1-6 of the system general education requirements.

Refer to the 2024-25 academic catalog for additional information regarding system general education requirements, elective courses, pre-/co-requisites and grade requirements.

A list of approved or recommended electives and other supplemental information may be obtained from your academic department.

Revised: July 2024



[CLICK HERE FOR ACCESSIBILITY](#)