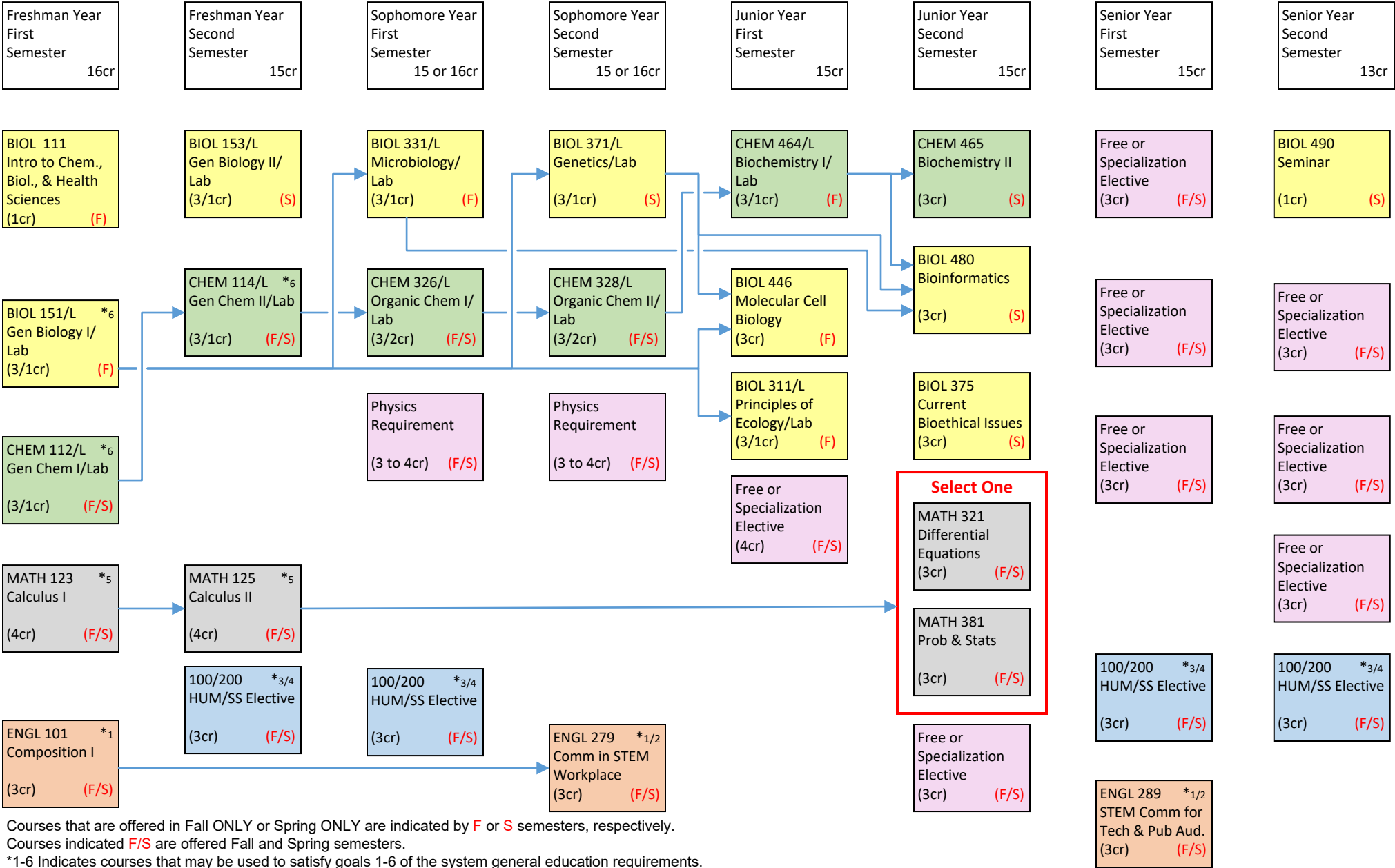


BS Biology: Molecular Biology Specialization Curriculum Flowchart 2025-26—120 credits



Courses that are offered in Fall ONLY or Spring ONLY are indicated by **F** or **S** semesters, respectively. Courses indicated **F/S** are offered Fall and Spring semesters.

*1-6 Indicates courses that may be used to satisfy goals 1-6 of the system general education requirements. Refer to the 2025-26 academic catalog for additional information regarding system general education requirements, elective courses, pre-/co-requisites and grade requirements.

A list of approved or recommended electives and other supplemental information may be obtained from your academic department.

Revised: July 2025

[CLICK HERE FOR ACCESSIBILITY](#)

